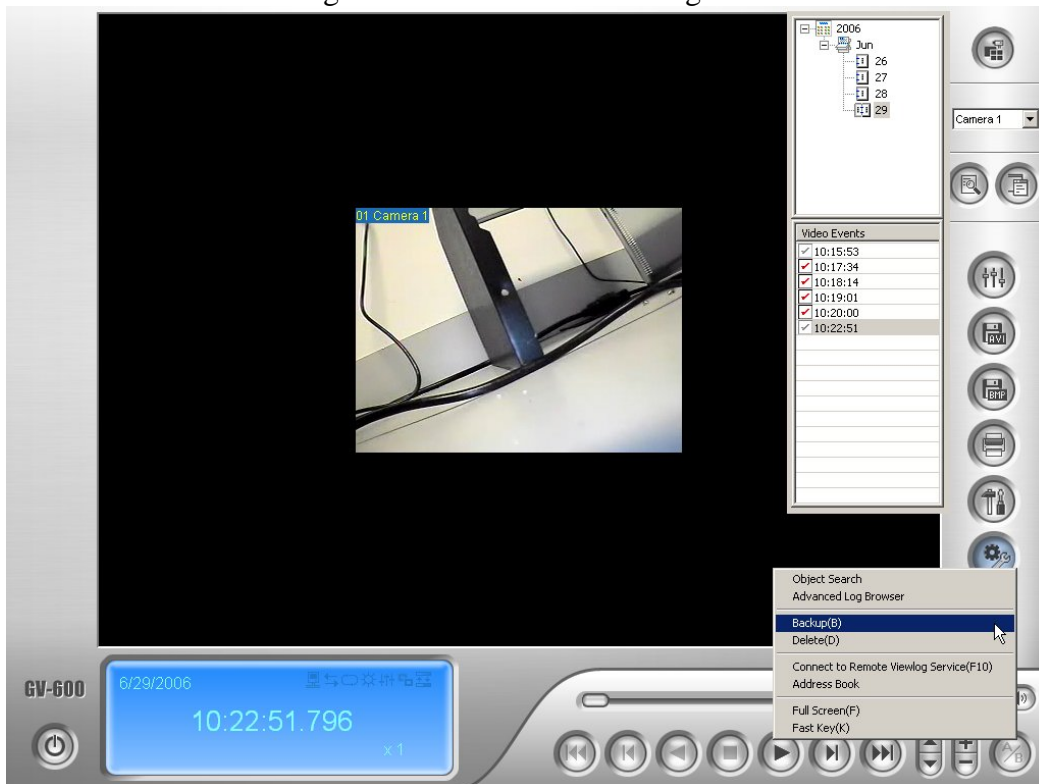
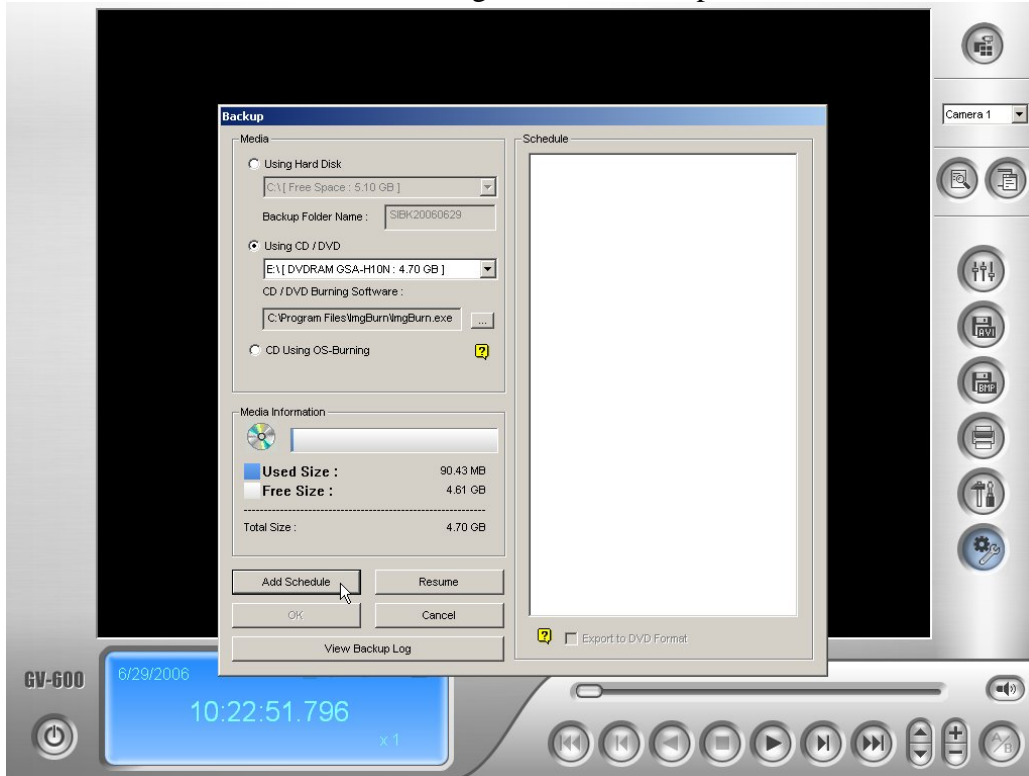


In the above screen you can see we are selecting the 'SEARCH' option, and then selecting 'Video/Audio Log(F10)'

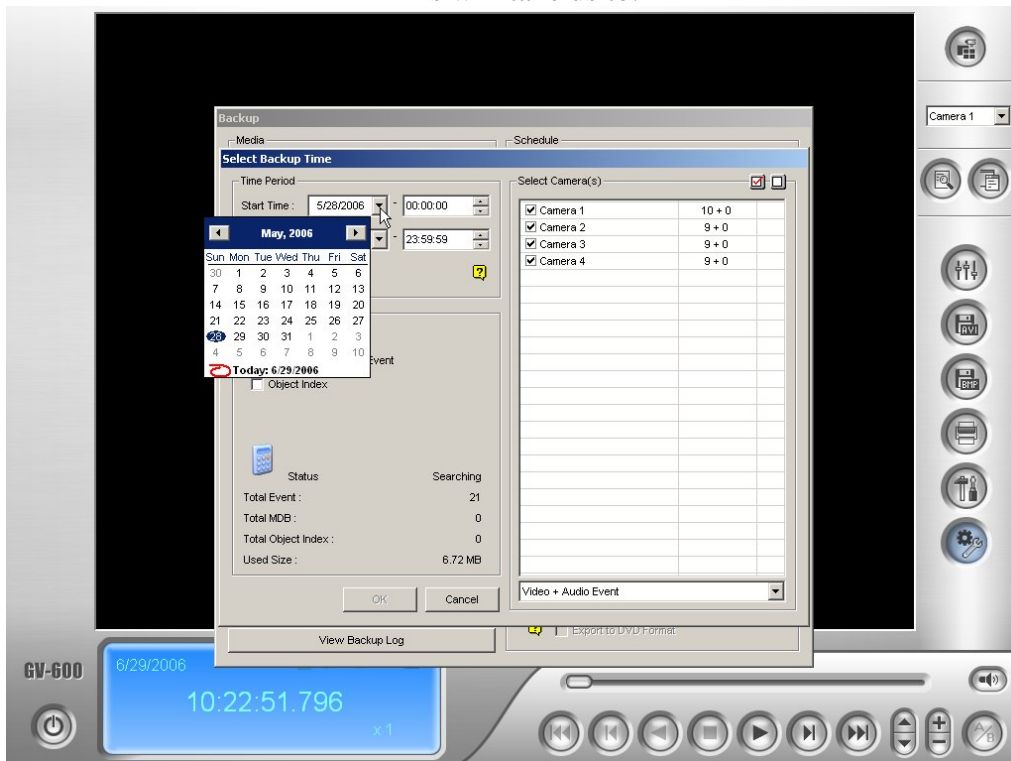
This will bring us to the 'Video/Audio Log' as seen below:



Once here, we will select our toolset and then select backup.
This will then bring us to the back up screen:

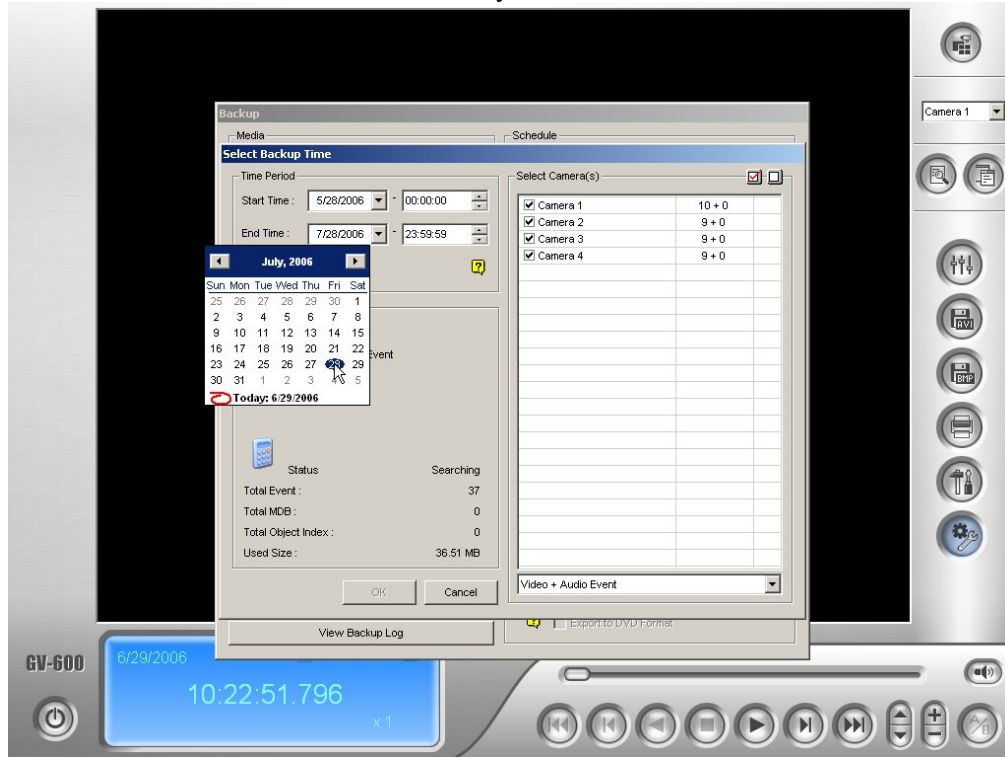


When you get to this point, click “Using CD/DVD” Then click “Add Schedule”
This will take us to:

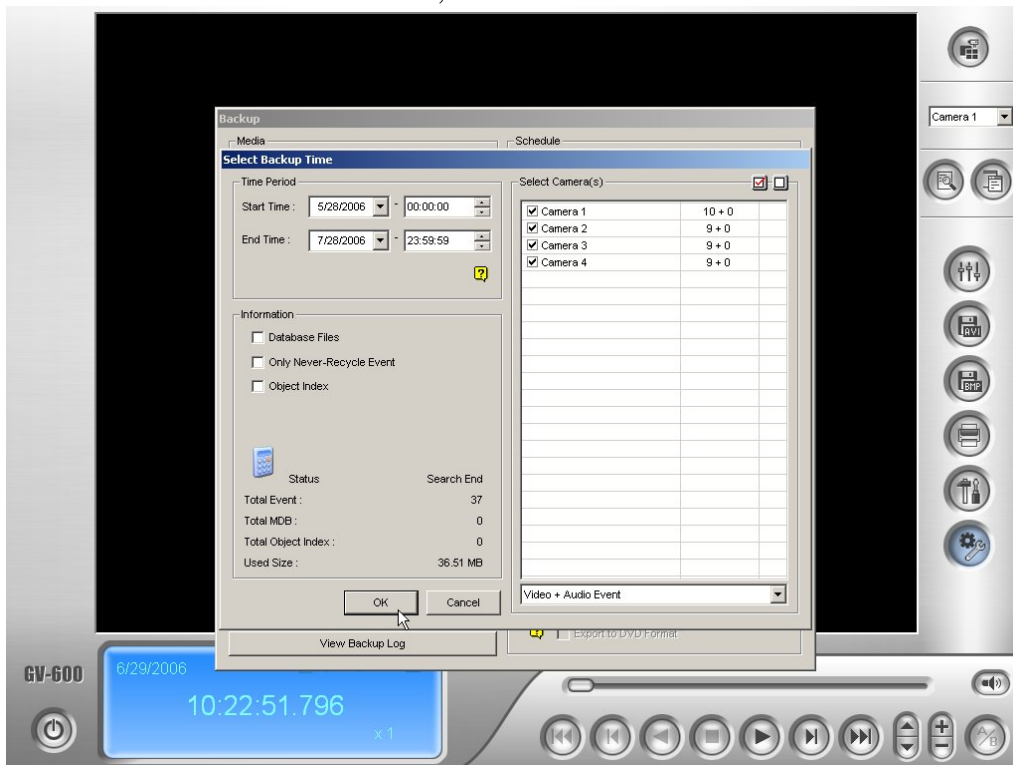


Go Ahead and select your start time.

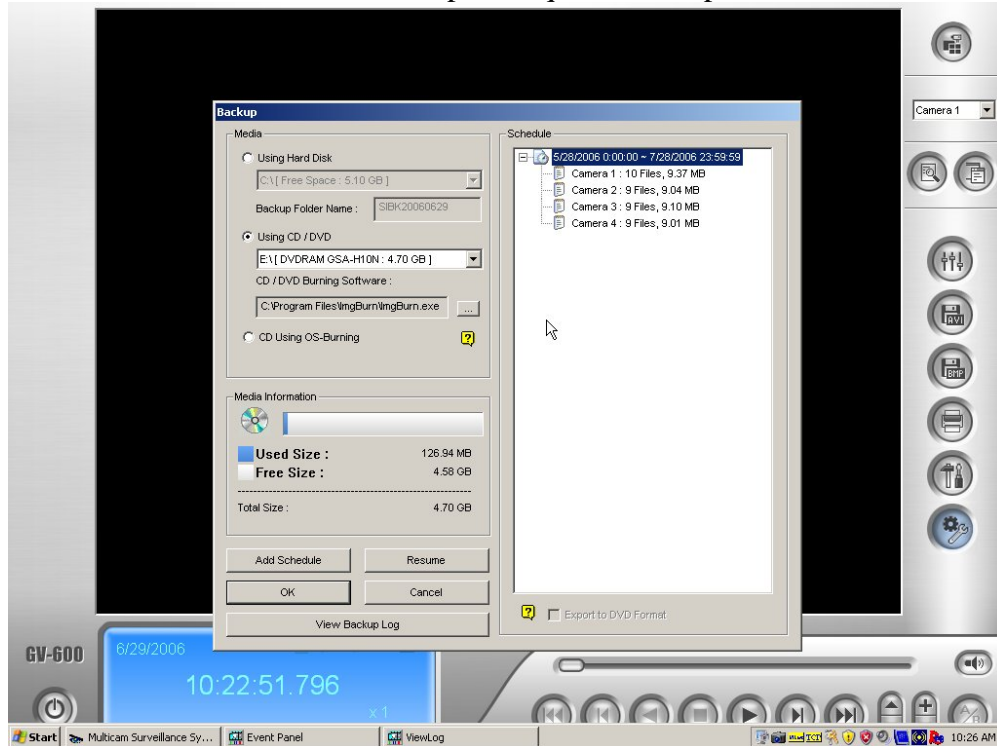
Then select your end time:



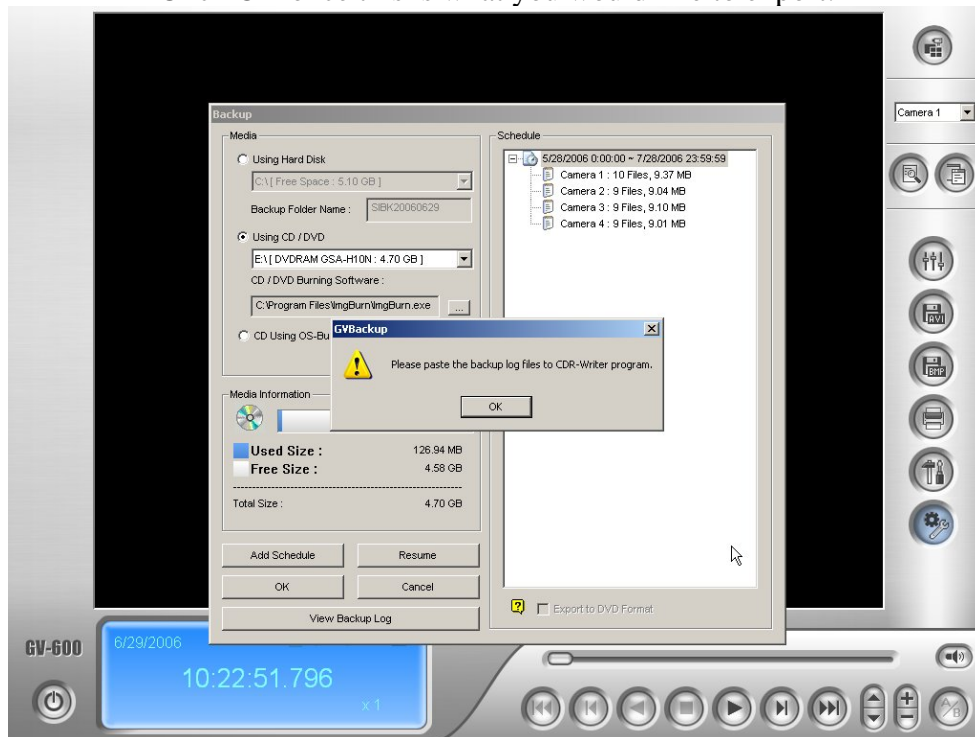
Now if you notice on the right hand side we have a list of the camera's that contain video data for the selected period of time. Make sure all of the camera's you wish to export are selected, and then click OK:



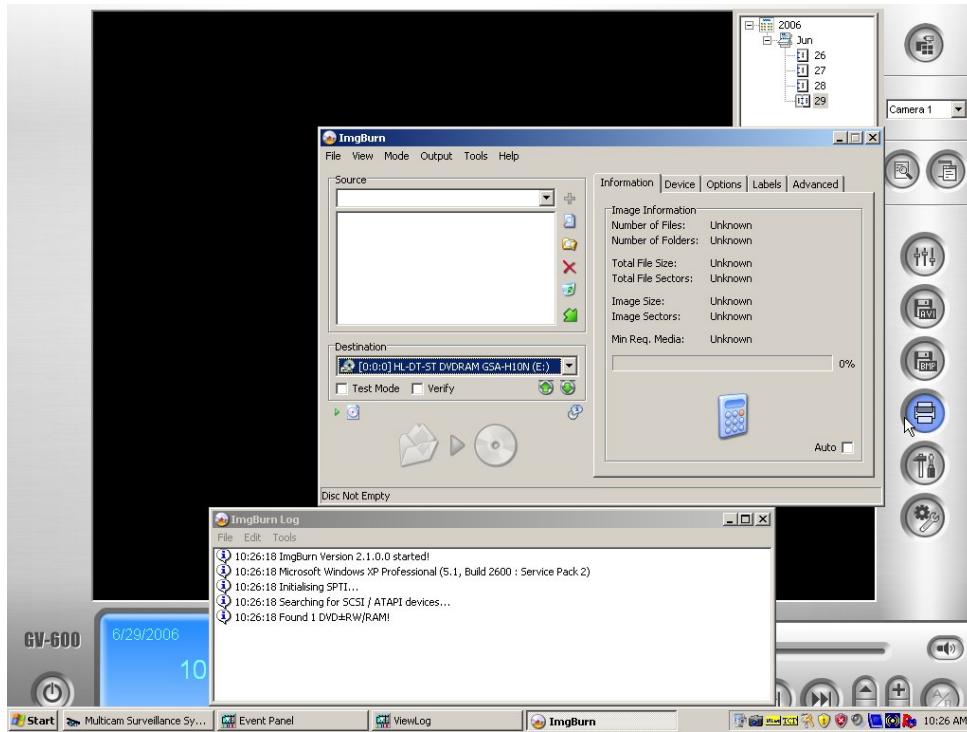
This next screen will confirm what we have selected in the previous screens and show us the amount of space required for export:



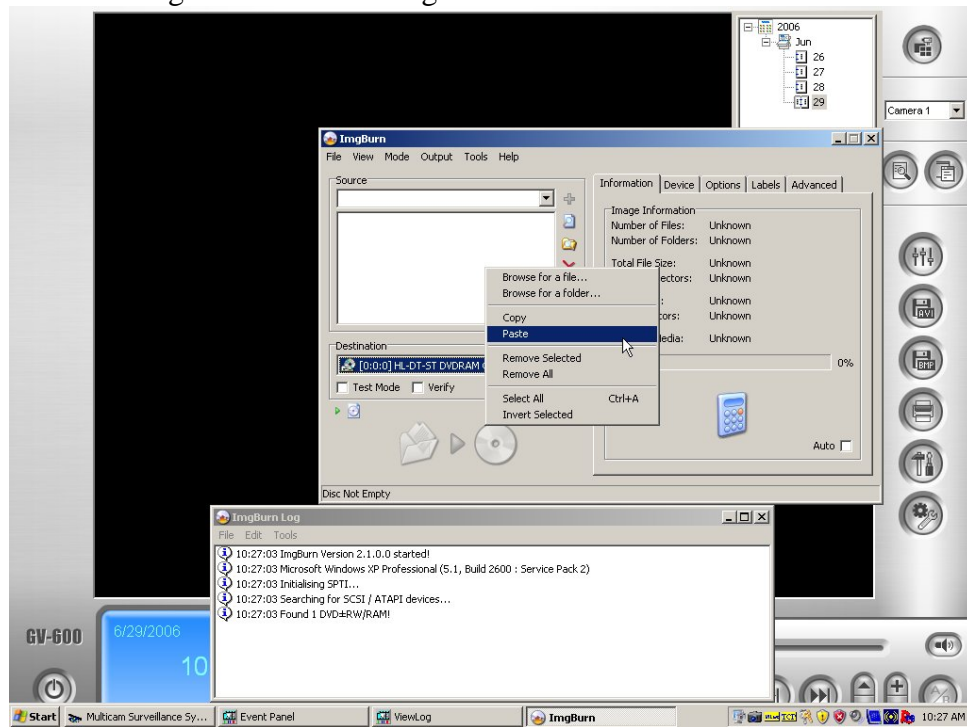
Click OK once this is what you would like to export:



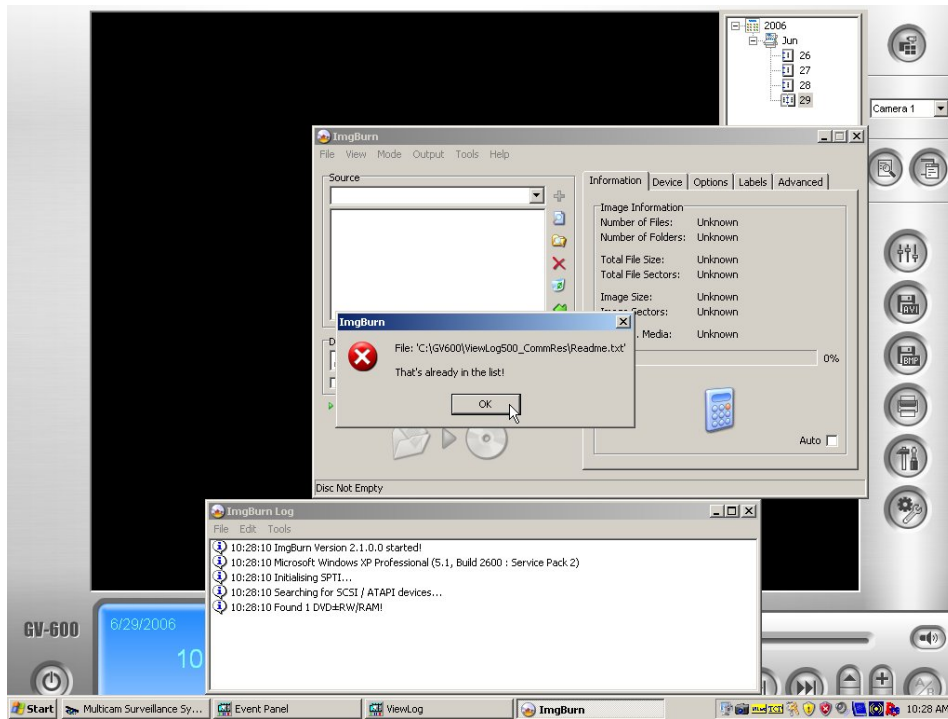
Click ok, and then the CD/DVD Burning application will launch:



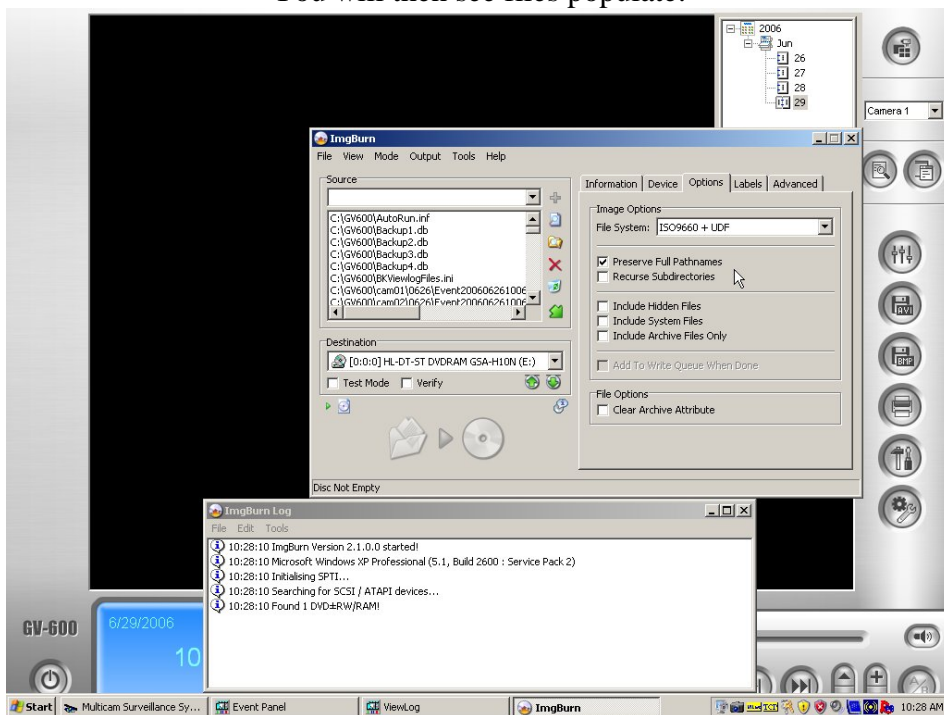
Right-Click in the Larger Source Box and Select Paste:



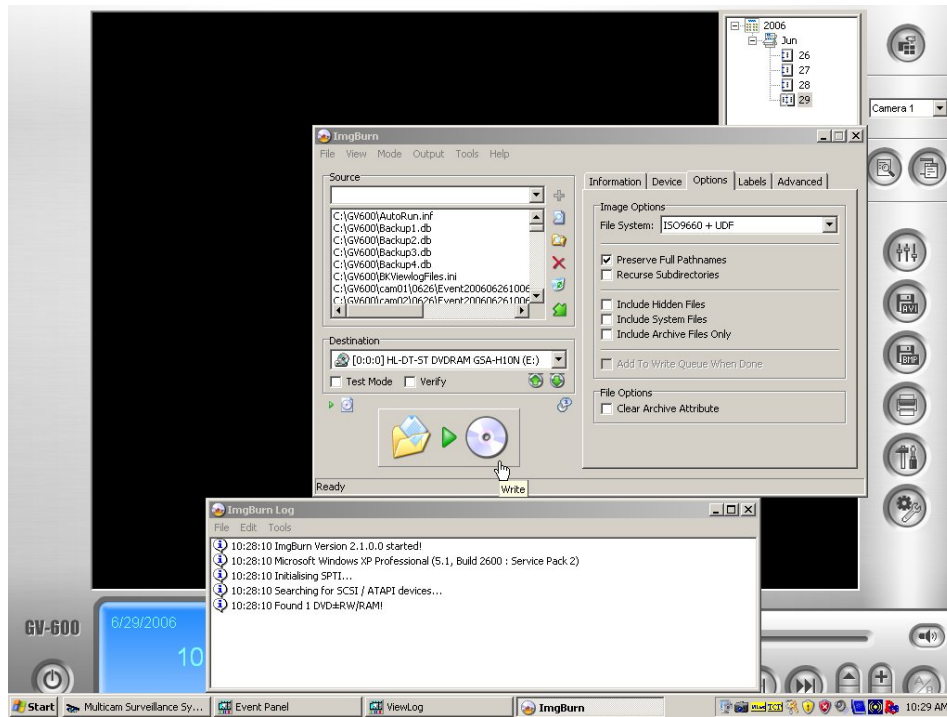
Click ok:



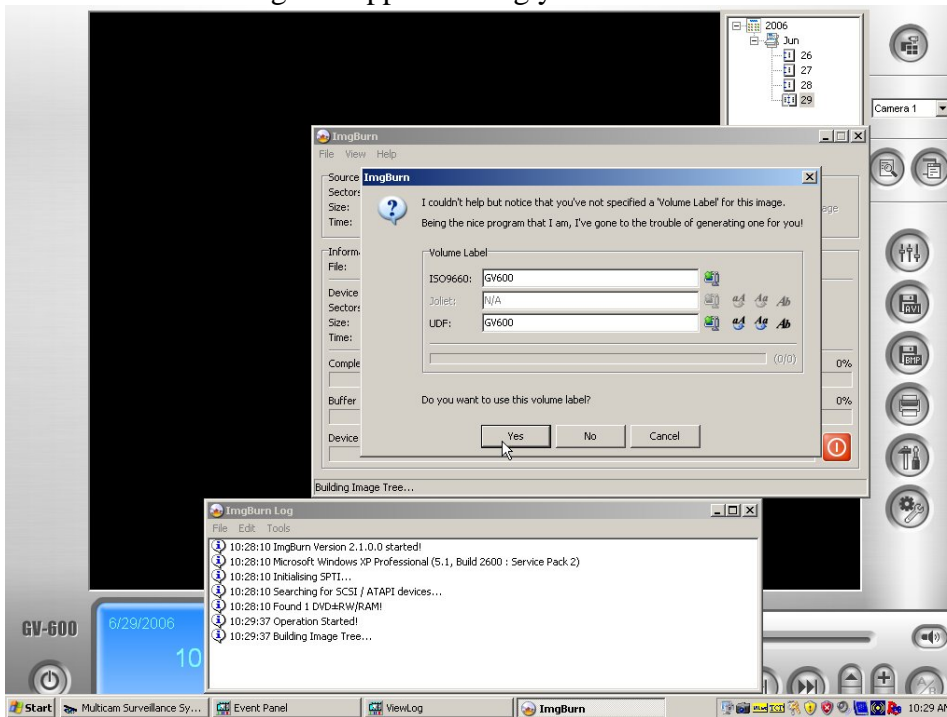
You will then see files populate:



Select "Write":

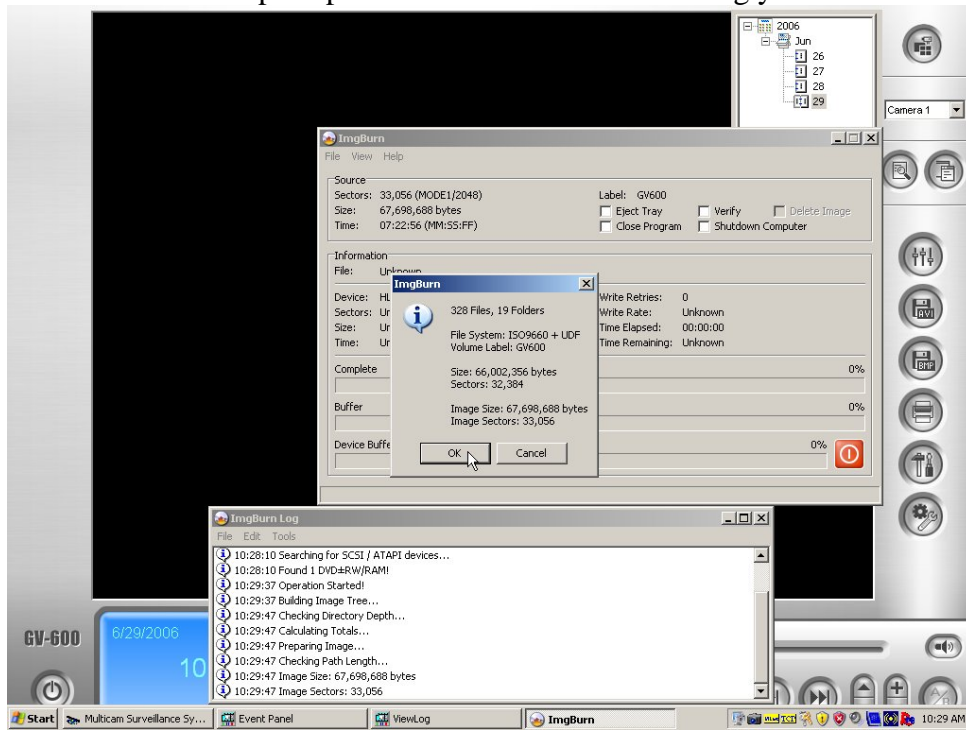


Dialog will appear asking you to name disk:

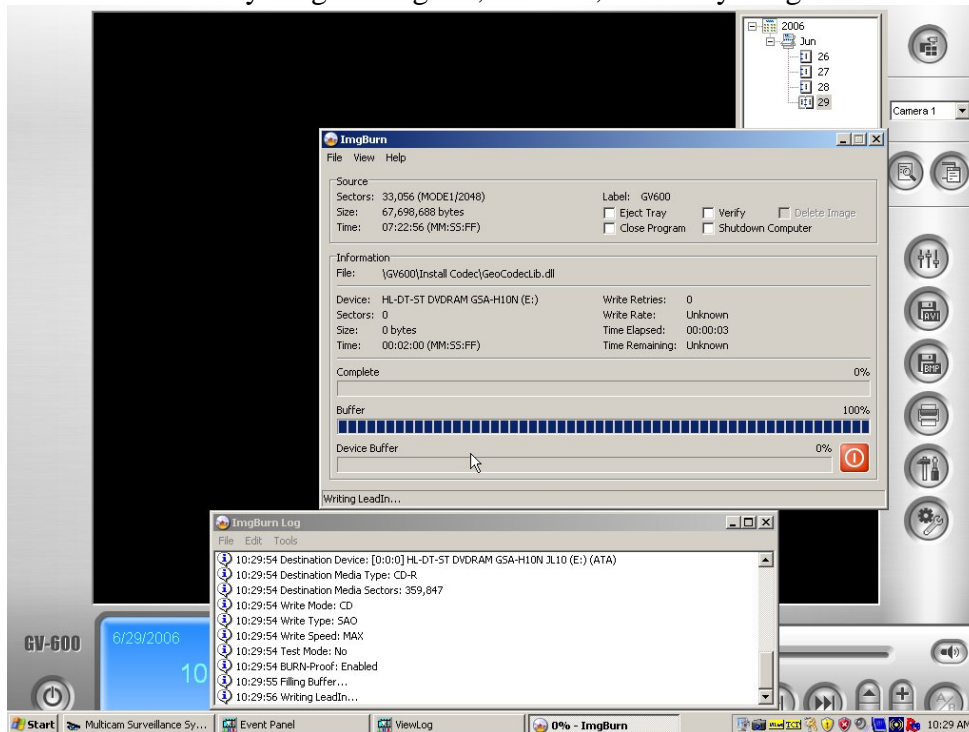


Enter DiskName and Select Yes

You should now be prompted one last time before burning your data to disk:

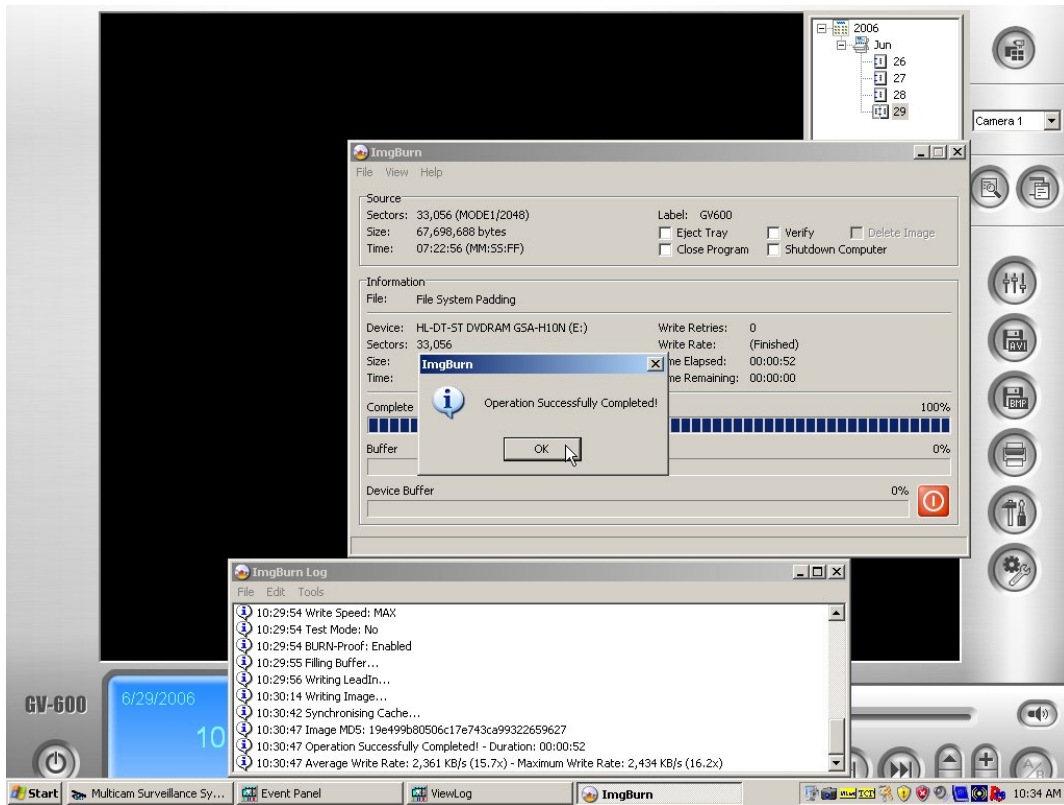


If everything looks good, click ok, and away we go:



Burning of media starts.

Several Moments Later:



Burning of data is now complete. Click OK.